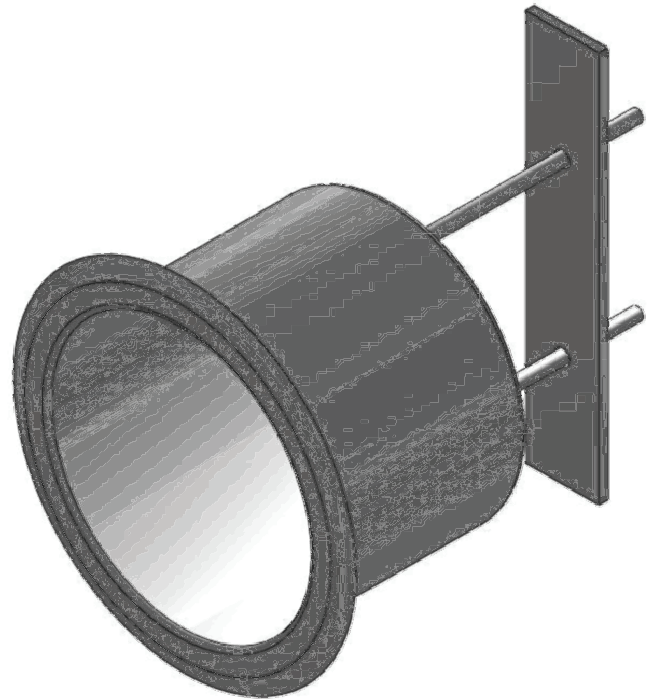
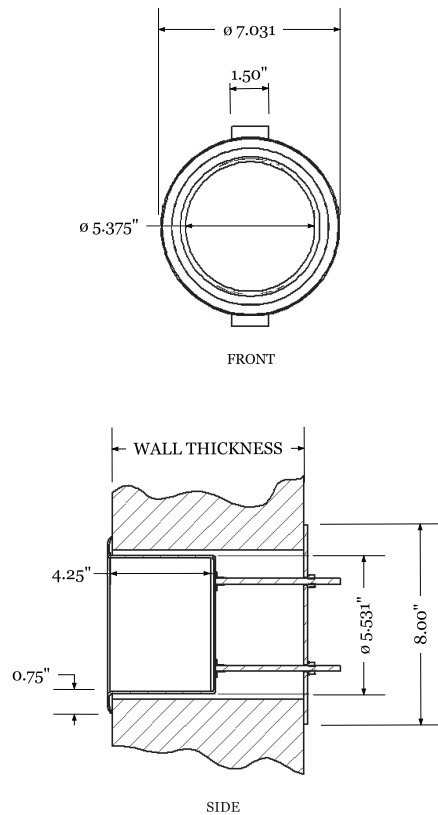


Recessed Toilet Paper Holder TPH-600



OVERVIEW

Recessed stainless steel toilet paper holder.

FABRICATION

14 gauge stamped stainless steel. Two 1/4-20 weld nuts welded to back side of can fastened with two 1/4-20 threaded rods, sized to extend 1" from the back side of the wall. Back bar is made from 7 gauge steel.

MATERIAL

- Type 304, 14 gauge stainless steel.
- Back bar is 7 gauge sheet metal.

FINISH

#4 brushed finish on face with a satin finish inside.

WEIGHT

TBD

ASSEMBLY

No assembly required.

INSTALLATION

Anchor into wall or cast into concrete anchorage.*

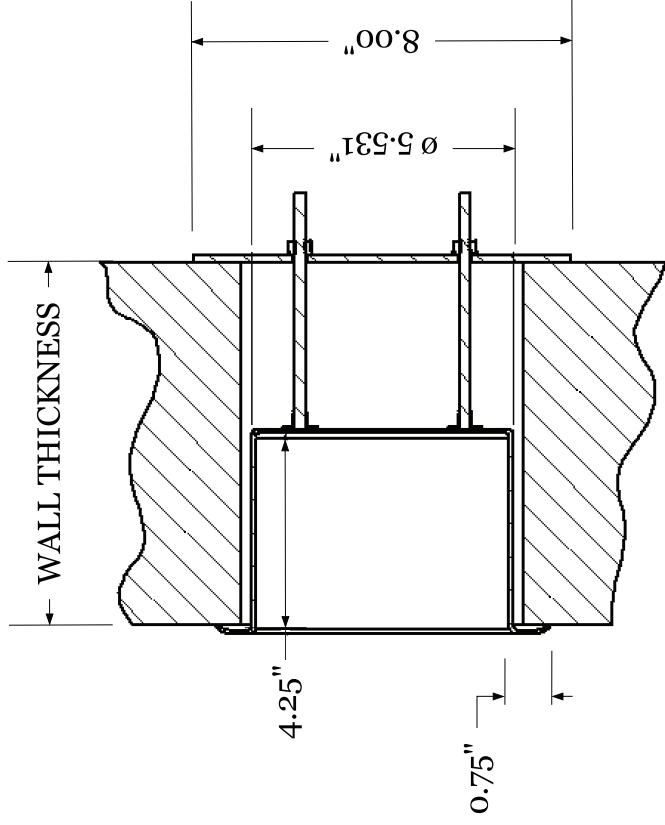
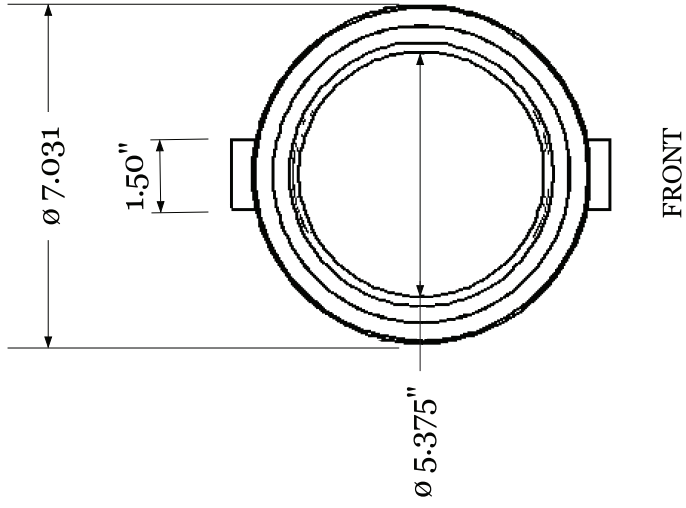
WARRANTY

1 year limited replacement warranty.

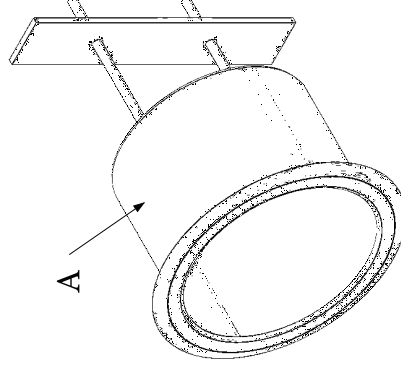
MAINTENANCE

Easy clean up with a damp cloth and mild detergent.

*Floor and wall mounting hardware not included.



SIDE



ITEM	DESCRIPTION	QTY
A	TOILET PAPER HOLDER, 304 STAINLESS STEEL, 14 G.	1
STANDARD TOLERANCES .X = $\pm .12$ " .XX = $\pm .06$ " .XXX = $\pm .03$ " ANGLE = $\pm 1^{\circ}$		

DERBY INDUSTRIES

Recessed Toilet Paper Holder
TPH-600

REVISIONS			REMARKS
MM/DD/YY			
1	--/--/----	...	
2	--/--/----	...	
3	--/--/----	...	
4	--/--/----	...	
5	--/--/----	...	